



SUPER NEEDLE JET NOZZLES



ADVANCED SOLID STREAM NOZZLE TECHNOLOGY STAINLESS, **RUBY** AND CERAMIC.

NOW FEATURING **PATENTED "ORIFICE INSERT SYSTEM"**®

Spray Nozzle Engineering has developed a patented **Orifice Insert System** on all **Ruby** nozzles. This mechanical sealing method **DOES NOT** rely on outdated adhesive anchors; reducing the risk of premature orifice dislodgement resulting from water hammer, line shock or cleaning operations. Standard orifice materials available:- **SNJR – Ruby** and **SNJC - Ceramic**.

PERFORMANCE INFORMATION

| SUPER NEEDLE JET NOZZLES(SNJ) | | | | | | | | | | |
|-------------------------------|-------------|-----------|-----------|-------------------|------|------|------|------|------|------|
| ORIFICE (mm) | THREAD SIZE | | | FLOW RATE | | | | | | |
| | 1/8" | 1/4" | 9/16" | LITRES/MIN @Bar G | | | | | | |
| | | | | 3 | 6 | 10 | 15 | 20 | 30 | 50 |
| 0.4 | SNJR | SNJR | SNJR | 0.16 | 0.22 | 0.31 | 0.35 | 0.39 | 0.53 | 0.8 |
| 0.5 | SNJR | SNJR | SNJR | 0.27 | 0.36 | 0.48 | 0.52 | 0.61 | 0.79 | 0.96 |
| 0.6 | SNJR | SNJR | SNJR | 0.38 | 0.55 | 0.7 | 0.72 | 0.78 | 0.83 | 1.2 |
| 0.7 | SNJR | SNJR | SNJR | 0.56 | 0.71 | 0.88 | 0.9 | 0.95 | 1.08 | 1.4 |
| 0.8 | SNJR | SNJR/SNJC | SNJR/SNJC | 0.59 | 0.82 | 1.1 | 1.3 | 1.5 | 1.8 | 2.0 |
| 0.9 | SNJR | SNJR/SNJC | SNJR/SNJC | 0.78 | 1.1 | 1.4 | 1.6 | 2.0 | 2.5 | 3.1 |
| 1.0 | SNJR | SNJR/SNJC | SNJR/SNJC | 1.2 | 1.6 | 2.2 | 2.4 | 3.1 | 3.8 | 4.7 |
| 1.2 | SNJR | SNJR | SNJR | 1.4 | 2.0 | 2.7 | 2.9 | 3.6 | 4.0 | 5.8 |
| 1.5 | SNJR | SNJR | SNJR | 2.0 | 2.8 | 3.6 | 4.1 | 5.2 | 5.9 | 7.8 |

APPLICATIONS

Washing felts and screens in paper mills and process equipment or whenever a high impact, hardwearing needle jet is required.



DIMENSIONS

| BODY TYPE | APPROX DIMENSIONS (mm) | | Weight (gms) |
|----------------------------|------------------------|------|--------------|
| | A | B | |
| (1/4" & 9/16") RUBY | 21.3 | 16 | 19 |
| (1/4" & 9/16") CERAMIC | 23.6 | 16 | 20 |
| 1/8" PROTECTED RUBY ONLY | 46.9 | 10.5 | 13 |
| 1/8" PENCIL RUBY ONLY | 35 | 10.5 | 12 |
| STANDARD FILTER FOR PENCIL | 50.5 | 17.5 | 25 |

CHARACTERISTICS

High Impact Needle Jet (0° spray angle) available in 5 body configurations*
Special configurations and adaptors available on request.



CONSTRUCTION

303 Stainless Steel body on all 1/8 inch pencil and protected body nozzles.
Brass available as an option on all 1/4 inch and 9/16 inch domed body nozzles.

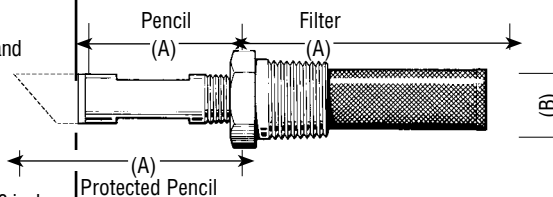
Patented **Orifice Insert System**®, on **Ruby** nozzles. Ceramic orifice available in 1/4 and 9/16 inch bodies.

*NOTES -

NOZZLES AVAILABLE IN 5 BODY STYLES

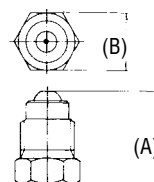
- (1) 1/8 "PENCIL BODY (SIZE 3 Body)**
- (2) 1/8 "PENCIL PROTECTED BODY (SIZE 3 Body)**
- (3) 1/4 "DOMED BODY (SIZE 6 Body)
- (4) 9/16 "DOMED BODY (SIZE 916 Body)
- (5) AIR SHIELD

PENCIL & PROTECTED BODY



**FILTERS - Stainless # 50 MESH filter supplied as an option. c/w 3/8" m x 1/8" f adaptor on pencil body nozzles.

DOMED BODY



DISTRIBUTED BY:

HOW TO ORDER

SNJR-SS3-08-P
(RUBY-1/8SS Pencil body-0.8mm orifice)

SNJC-BR916-10-D
(CERAMIC-9/16 Brass domed body-1.0mm orifice)

WARRANTY: The manufacturer will replace, repair or refund the purchase price of The Product at their option, free of charges, except transportation, if defective in their manufacture. Claims must be notified to the manufacturer within 90 days of sale or shipment either of which occurs first. The Product should be returned to the place of purchase. This warranty is exclusive remedy and the Manufacturer/Distributor shall not be liable for consequential damages, injury or commercial loss. The Manufacturer/Distributor makes no warranty of fitness for a particular purpose and makes no other warranty, express or implied arising from the course of dealing or usage in trade. Specification subject to change without notice. Chemical and Temperature compatibility is responsibility of purchaser, compatibility charts available at request.

